

DECEMBER

- 1-28... "Tree Fest" exhibit, Ashe Arts Center
- 1-23... *Jacob Marley's Christmas*, Barter Stage II, Abingdon, VA
- 1-27... *White Christmas*, Barter Theatre, Abingdon, VA
- 1-27... *The Santaland Diaries*, Barter Stage II, Abingdon, VA
- 1-31... *A Wohlfahrt Haus Christmas*, Wohlfahrt Haus Dinner Theatre, Wytheville, VA
- 3... Appalachian Chorale, 8pm, Rosen Concert Hall, ASU
- 6... Christmas Crawl, 5-8 pm, downtown West Jefferson
- 7... Saturday With Santa, 8:30-11:15 am, Ashe Arts Center
- 7... Holiday Open House, 11:30 am-4pm, Ashe Arts Center
- 7... Ashe County Farmers Holiday Market, 9am-1pm, 208 Backstreet, WJ
- 8... The Joyous Sounds of Christmas, 3pm, West Jefferson UMC
- 12... Ashe County Choral Festival, 7pm, Ashe County High School
- 12... John Berry Christmas, Walker Center, Wilkesboro
- 12... Ashe County Piecemakers Quilt Guild, 2 pm, Ashe Services for Aging
- 13... MtnHome Music: An Appalachian Christmas, 7:30 pm, Grace Lutheran
- 13-14... A Carolina Snowbelle Christmas, Appalachian Theatre, Boone
- 15... Bethany Ding-A-Lings Handbell Concert, 7pm, Bethany UMC
- 21... Wordkeepers Salon, 4pm, Ashe Arts Center
- 21... MtnHome Music: Celtic Christmas, 7:30 pm, Appalachian Theatre

JANUARY

- 8-31... "Patterns" exhibit, Gallery of the Ashe Arts Center
- 9... Ashe County Piecemakers Quilt Guild, 2 pm, Ashe Services for Aging
- 9-31... *Forever Plaid*, Wohlfahrt Haus Dinner Theatre, Wytheville, VA
- 10... Artists' reception for "Patterns" Exhibit, 5-7pm, Ashe Arts Center
- 11... Coffee House Live!, 7:30 pm, WJUMC Hensley Hall
- 14... Ashe County Arts Council meets, 6:30 pm, Ashe Arts Center
- 20... Martin Luther King Holiday Celebration, 7pm, Ashe Arts Center
- 25... The Kruger Brothers in concert, 7:30 pm, Ashe Civic Center
- 30... *The Greatest Love of All* - A Tribute to Whitney Houston, Walker Center, Wilkesboro



The Gallery & Gallery Shop
 303 School Avenue, Downtown West Jefferson
 Monday – Friday 9 am – 5 pm
 Saturday 10 am – 4 pm thru December 28
 We will resume Saturday hours in April!

FEBRUARY

- 1... Lyle Lovett and his Acoustic Group, 7pm, Schaefer Center, ASU
- 1... Harmonia Baroque, 7:30pm, Ashe Arts Center
- 9... Ashe Chamber Society: Eric Koontz and Junie Chu, 2pm, Arts Center
- 11... Ashe County Arts Council meets, 6:30 pm, Ashe Arts Center
- 12-28... "Lyrical Light and Color" exhibit, Gallery of the Ashe Arts Center
- 13... Ashe County Piecemakers Quilt Guild, Ashe Services for Aging
- 14... Todd Wright's Valentine Evening, 8pm, Rosen Concert Hall, ASU
- 14... Artist's reception for "Lyrical Light and Color" Exhibit, 5-7pm, Ashe Arts Center
- 22... Shana Tucker in concert, 7:30 pm, Ashe Civic Center
- 22... Trinity Irish Dance Company, 7pm, Schaefer Center, ASU

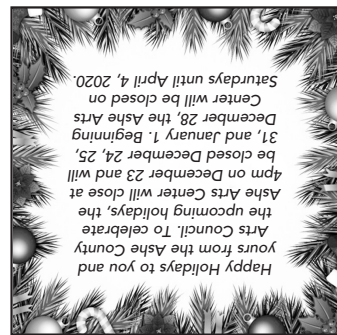


STAFF: Jeff Fissell, Executive Director
 Linda Dreyer, Director of Operations
 Rebecca Williams, Program Director

Web site: www.ashecountyarts.org E-mail: director@ashecountyarts.org
 303 School Avenue, West Jefferson, NC 28694

336.846-2787

**Hours of Operation: Monday – Friday 9am - 5pm
 Saturday 10am - 4pm Thru December 28 only**



Ashe County Arts Council
 303 School Avenue
 West Jefferson, NC 28694

ARTS / DATES

Publication of the Ashe County Arts Council



THE KRUGER BROTHERS

The Kruger Brothers return to the stage of the Ashe Civic Center for a concert on January 25! Reserved seating tickets are available in advance for the Saturday evening performance. Brothers Jens and Uwe Kruger and Joel Landsberg have delighted audiences everywhere with their unique sound that has made them a fixture in the world of acoustic music.

Born and raised in Europe, Jens and Uwe began singing and playing instruments at a young age. They were exposed to a wide diversity of musical influences and began their professional career as a duo. Bassist Joel Landsberg, a native of New York City, joined the ensemble in 1995. With Jens Kruger (banjo and vocals), Uwe Kruger (guitar and lead vocals), and Joel Landsberg, together they have established the incomparable sound that The Kruger Brothers are known for today.

The Kruger Brothers innovation with music composition that blends traditional and classical genres has produced outstanding new works. The result is unpretentious, cultivated, and delightfully fresh. *An Appalachian Concerto* for string band and string quartet was commissioned by the Ashe County Arts Council and premiered at the Ashe Civic Center in 2010.

Concert time is 7:30; adult admission is \$27, students \$5. Call 336.846-2787 for tickets or get them online at ashecountyarts.org. Don't miss this one!



SHANA TUCKER in concert

February 22, 7:30 pm, Ashe Arts Center

With a deep respect for lyrical storytelling, cellist/singer-songwriter **Shana Tucker** delivers a unique voice through her self-described genre of ChamberSoul™. Shana's melodies weave strong hints of jazz, classical, soulful folk, acoustic pop and a touch of R&B into a distinctive rhythmic tapestry.

Touted by JazzTimes Magazine as a jazz talent "...whose imprint and vitality has already been quite visible..." Shana's style and sound as been described as a blend of Dianne Reeves, Joni Mitchell, and Tracy Chapman, with an efficient complexity that is reminiscent of Bill Withers. ChamberSoul™ best describes what the listener should expect when experiencing Shana's music. "I'm intrinsically drawn to "real" instruments, with resonance, tone and depth that can sound without amplification. Whenever and however possible, I always try to set a tone of acoustic intimacy with my colleagues on stage, and also with the audience, so that the music, performers and audience feel close and tangible, no matter the size the venue."

Tickets are \$18 for adults and \$5 for students and are available online at ashecountyarts.org or by calling 336.846-2787.



CHRISTMAS MINIATURES

Good things come in small packages! And that definitely applies to art! The **Christmas Miniatures** exhibit challenges artists to create new works of art no larger than twelve inches square. The miniature works in oil, watercolor, acrylics, photography, and fibers are from artists Douglas Butler, Lydia de la Cerda, Amy Queen Chappin, Marion Cloaninger, Theresa Early Curd, Evalynn Halsey, Michelle Handler, Deb Jones, Patricia Leonard, Jennifer Ley, Sequoyah Magroski, Ellen Messina, Judy Mitchell, Pat Morrison, Lisa Pepper, JoAnn Pippin, Scot Pope, Cheryl Roberts, Cher Shaffer, Collette Shomaker, Audrey Spencer, Susan Van Wyk, Carolyn Weckstrom, Marilyn Wooten, and others. **Christmas Miniatures** will be on display through December 28. Celebrate the season with a new work of art – they make great gifts, too!



GIFT CERTIFICATES
 Gift Certificates for the Ashe Arts Center Gallery Shop or Community Concerts at the Ashe Civic Center or Ashe Arts Center are available for your giving convenience. Stop by for your holiday shopping needs.
And remember the Arts Council in your end of year giving.

THE GALLERY
 Tree Fest, seven artfully-decorated theme Christmas trees *Christmas Miniatures*, new works by area artists.

THE GALLERY SHOP
 Christmas Marketplace brings you the finest in handmade holiday crafts and gifts. Complete your holiday shopping locally with the finest in jewelry, pottery, baskets, paintings and photography, books, wooden bowls, ornaments, stained glass, silk scarves, quilted goods, CDs, note cards and much more!

ASHE COUNTY STUDENTS ARE JAMMIN’

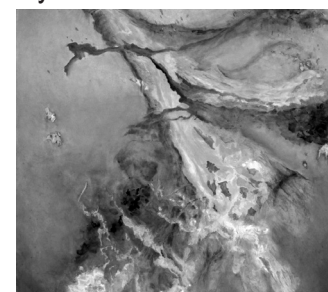


In 2019-2020 the **Junior Appalachian Musicians** program is providing beginning and intermediate classes for over 30 students at the Ashe Civic Center. Third through eighth grade students are learning traditional banjo, fiddle, and guitar. This year the **JAM** program has added a new beginning traditional dance class! **JAM** is sponsored by the Ashe County Arts Council and is funded in part by a Folklife Program Grant from the North Carolina Arts Council, a division of the Department of Natural and Cultural Resources and the Wayne Henderson Foundation. For more information please call 336-846-2787.

Lyrical Light and Color

A solo exhibition by Susan Jespersen

Susan Jespersen has created a solo exhibit that will introduce a unique abstract approach, “lyrical abstract expressionism” influenced by Chu The Chun and Zao Woo Ki, Chinese artists who migrated to Paris to become important Western oil painters in the late 20th and early 21st Century. These paintings are bright lovely colors applied with free expression. The term “lyrical” relates to colors that virtually sing. In addition to a selection of floral and lyrical abstract paintings, there will also be a series of 6 large paintings related to the concern for the impact of climate change.



Fusion, 2017

The exhibit runs from February 12 through March 13. The opening reception will be from 5–7 pm on Friday, February 14.

HARMONIA BAROQUE

An evening of classical music will be presented at the Ashe Arts Center at 7:30 pm Saturday, February 1 by **Harmonia Baroque**. The ensemble performs on historical instruments that are distinct replicas of 18th-century instruments for which Baroque music was written. The sound and style of the music of early composers are re-created in an intimate atmosphere for a true chamber music experience.



The ensemble is composed of Ashe County’s own **Michael Bell** on harpsichord, and Appalachian State University School of Music faculty members **Alicia Chapman** (hautbois), **Nancy Schneeloch-Bingham** (traverso), **Corinne Cassini** (baroque cello), and **Douglas James** (theorbo). The program includes music by Telemann from Germany, d’Hervelois from France, Platti from Italy, and one of the most popular tunes from the 1730s, “La Folia” by Vivaldi. Tickets are \$18 for adults and \$5 for students and are available online at ashecountyarts.org or by calling 336.846-2787.

Ashe Chamber Music Society Announces Winter/Spring Schedule



The Ashe County Arts Council is pleased to present, for the second year, a series of chamber music concerts supported by the **Ashe Chamber Music Society**. Four concerts are planned for the winter/spring season, with all scheduled for Sunday afternoons at 2:00* in the Ashe Arts Center. The four-concert series opened with November’s presentation of Schubert’s Trout Quintet, performed by the Hayes Faculty Ensemble.

The second concert, scheduled for Sunday, February 9th, at 2:00 pm, will feature the viola and piano duo of Erik Koontz and Junie Chu, members of the ASU music faculty. They will be playing Darius Milhaud’s Sonta #2 for Viola and Piano, Alan Arnold’s Grand Fantasy on

Themes from George Gershwin’s Opera “Porgy and Bess,” Arthur Benjamin’s Sonata for Viola and Piano, and Astor Piazzolla’s Le Grand Tango. Be sure to mark your calendar.

The third performance will feature the Hayes Faculty Ensemble Trio of Bair Shagdaron, Erik Koontz, and a guest clarinetist on Sunday, March 22. On April 5th, the series will conclude with a performance by the cello and piano duo of Ellie Wee and Barry Salwen. Look for the next edition of Arts Dates for more information.

Tickets are \$18 for adults and \$5 for students. The Ashe Arts Center is located at 303 School Avenue in West Jefferson. For information, please contact the Arts Council at 336-846-2787.

*Please note that some published information incorrectly lists the time for these concerts. All are Sunday concerts, and will begin at 2:00 pm.



CO-OPTED TRIANGLES
Acrylic by Ron Pehmoeller

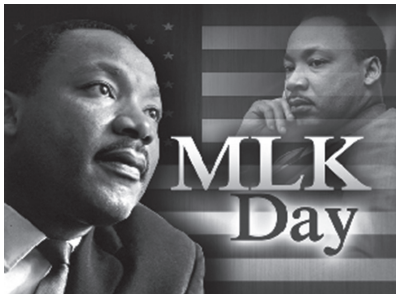
PATTERNS

There are patterns all around us - symmetrical, asymmetrical, as well as patterns that are random in nature. The January Gallery exhibit will have **Patterns** expressed in paintings, photography, fiber arts, multi-media and 3-dimensional works.

Featured artists include Scott Ballard, Dick Bruns, Douglas Butler, Lydia de la Cerda, Amy Queen Chappin, Marion Cloaninger, Theresa Early Curd, Michelle Handler, Carla Houck, Debra Jones, Sequoyah Magroski, Deborah Mauser, Ellen Messina, Pat Kincheloe Morrison, Lou Nachman, Ron Pehmoeller, Lisa Pepper, Scot Pope, Colette Shomaker, Audrey Spencer, Ann Spragens, Jay Wild, Roger Williams and others.

The exhibit runs through February 7, 2020. The opening reception will be held from 5-7pm on Friday, January 10.

MARTIN LUTHER KING DAY CELEBRATION



The Ashe County Arts Council will sponsor a community celebration in honor of Dr. Martin Luther King at 7pm on Monday, January 20th at the Ashe Arts Center in West Jefferson. The celebration will highlight the message of Dr. King and his teachings of peace, unity and equality in our society. The program will include excerpts from letters and writings of Dr. King as well as special music under the direction of Diane Bryan.

Guest performer Mike Wiley will also be featured. Mike will be presenting excerpts from his play "We Can Be Heroes."

The evening program is free and open to the public. Funding for the Celebration is made possible by a Grassroots Grant from the North Carolina Arts Council, a division of the Department of Natural and Cultural Resources, with funding from the National Endowment for the Arts. For more information, call 336.846-2787.

MEMORIALS

The Ashe County Arts Council welcomes contributions in honor of those living or in memory of those departed. Memorials are a fitting way of showing love and respect and of recognizing individuals for their community service or their good life. Unless otherwise designated, memorial funds are used to provide much needed operational support for your county-wide arts council. Call us at 336.846-2787 for more information.



COFFEE HOUSE LIVE!

Mark your calendars for the next special **COFFEE HOUSE LIVE!**

Saturday, January 11, 2020, 7:30 pm

Hensley Hall at West Jefferson United Methodist Church

Enjoy an evening of great Arts Council desserts, coffee and beverages, along with the best in High Country entertainment.

We are planning a fantastic evening with three great acts! Details to follow.

Admission at the door: \$16 adults, \$5 students.

For more information, call 336.846-2787



STUDIO TOUR

Calling all artists!

Plans are underway for the 2020 Ashe County Studio Tour. The 2020 event will include an exhibit at the Ashe Arts Center, a Friday night artist reception, and two days of open studios. If you are a visual artist who lives in Ashe County and you'd like to welcome visitors to your studio, contact the Arts Council for more information.

Application forms will be available February 1. Tour dates are August 1-2, 2020. Mark your calendars now!

SATURDAY WITH SANTA

Saturday, December 7th
Entry at 8:30, 9:15, 10:00 and 10:45 am
Ashe Arts Center

Free picture with Santa!
 Story time with Mrs. Claus! Christmas Crafts!
 Milk and cookies with Santa!
 Each child will receive a bag of goodies and a Christmas book!

LIMITED SPACE AVAILABLE
 call 336-846-2787 to make reservations - FREE

Sponsored by the Ashe County Arts Council

WORDKEEPERS SALON

Mark your calendar for Saturday, December 21 for the next installment of the Wordkeepers Salon. Readings begin at 4pm with writers sharing their latest prose and poetry in five-minute open microphone time slots.

Wordkeepers is free and open to the public; refreshments are provided. Writers interested in reading from their work should email Diana Renfro at RenfroDiana@msn.com to secure their first-come, first-served spot on the bill, and to receive guidelines for reading.

In 2020 Wordkeepers returns to the Ashe Arts Center the third Saturday every other month April through December.

amazonsmile
 You shop. Amazon gives.

We hope you're doing much of your shopping and gift giving right here at home! And we hope that some of your gifts will be art from our local artists. But chances are you're shopping on Amazon, too. If so, why not make it Amazon Smile so that a portion of proceeds benefit your favorite organization - the Ashe County Arts Council! It's really easy to do and doesn't cost you anything extra. Go to www.smile.amazon.com to get started.

CHRISTMAS Crawl

Promoting West Jefferson's Arts District

Friday, December 6
5:00-7:00 pm

Participating galleries:

| | |
|-------------------------------|------------------------|
| Ashe Arts Center | Originals Only Gallery |
| Ashe Custom Framing & Gallery | Quilt Square Girls |
| Bohemia Gallery | RT Morgan Art Gallery |
| Catchlight Gallery | The Vintage Locket |
| Florence Thomas Art School | |
| Great Southern Gothic | |

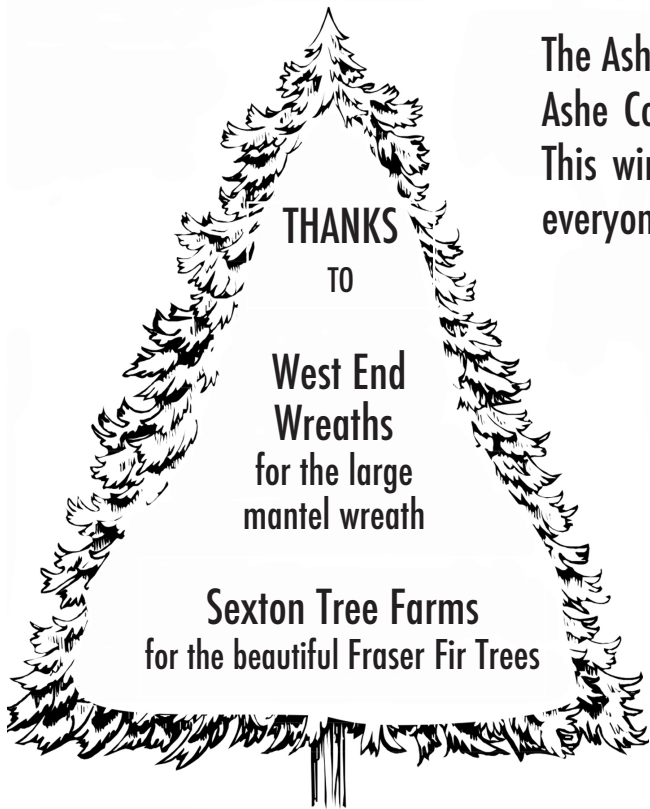
For more information, call the Arts Center at 336.846-2787

Tree Fest

November 26 through December 27, 2019

Gallery of the Ashe Arts Center

The Ashe County Arts Council celebrates the holiday season and Ashe County Christmas trees with beautifully decorated trees. This winter wonderland has been created with something for everyone and represents community involvement with the arts.



ORNAMENTS!

The Ashe County Arts Council's tree features handcrafted holiday decorations from local artists Catherine Finch, Evalynn Halsey, Patricia Leonard, Candice Martin, Theresa McGrath, Ellen Messina, Pat Morrison, Bob Piastuch, Rose Powers, Cher Shaffer, Phil & Linda Wylie, and others. The original ornaments by these artists include works in wood, clay, metal, glass, paper and fabric. The ornaments are for sale and make great presents!

ASHE COUNTY CHORAL FESTIVAL

The Ashe County Choral Festival will be held Thursday, December 12 at 7:00 at Ashe County High School. The event is free and open to the public. The Festival will showcase the high quality choral programs available in Ashe County schools and will feature an evening of individual choruses and massed choir selections all with a holiday theme.

Participating choruses and their directors include Blue Ridge Elementary (Polly Falls), Mountain View Elementary (Vanessa Van Valin), Westwood Elementary (Mazie Sullivan), and Ashe County Middle School (Melodie Salley).



Funding for the Choral Festival is made possible with a Grassroots Arts Program Grant from the N.C. Arts Council, a division of the Department of Natural and Cultural Resources, with funding from the National Endowment for the Arts and is sponsored locally by LifeStore Bank & Insurance. This event is free. For more information call 336.846-2787.



The Ashe County Arts Council exists to enrich the cultural life of Ashe County by nurturing and supporting the arts. Your contribution is an investment in the future of your community. Our 2019-2020 Fund Drive continues with lots of community support. The Ashe County Arts Council is grateful to the following business and individual contributors who make our program possible. These donations were made between July 1 and November 12, 2019:

ARCHANGEL \$5000-UP

Anonymous
Dave & Lynne Eastburn
North Carolina Arts Council

ANGEL \$2500-4999

Ashe County Little Theatre

SPECIAL \$1000-2499

Anonymous
Julia Bishop
Cheap Joe's Art Stuff
LifeStore Bank & Insurance
Ed & Ellie Perzel

SPONSOR \$600-999

Gerald & Irene Bebber
Michael & Joanie Bell
Rudy & Theresa Early Curd
Walt & Jane Davis
Edmund & Betsy Gant
Grady & Jane Lonon
Kent & Becky Marsten
Calvin & Katrina Miller
Bill & Anita Pangle

BENEFACTOR \$400-599

Anonymous
Bill & Donna Apple
Bob Clark & Bobbie Barden
Blue Ridge Energy
Tim & Debbie Davis
Joy Dove, IMO Red Dove
Chris & Jane Glass
Andy & Pam Guion
Roy & Irby Hutchins
Clint & Barb Johnson
Donnie & Dana Johnson
Philip & Carolyn Johnson
Wayne & Diane Johnson
Gerhard & Karin Kalmus
John & Jane Maddocks
Tom & Linda McLintock
Michele Obenchain
Perry's Gold Mine
Louis & Janet Pittard
Ray Podd & Linda Stanley
Howell & Becky Pruet
Wade & Sarah Sanders
Skyline Membership Corp.
John & Lucy Smyre

BENEFACTOR \$400-599 cont.

Bill & Sue Stiles
James & Pam Tapp
Dr. Jane Testerman
Steve & Carolyn Trinkle
Henry & Nancy Unger
Terry & Guyla Vardell
Joel & June Weaver
Phil & Linda Wylie
Kent Zotter, Ridgeline Properties

PATRON \$300-399

Anonymous
Richard Blohm
Tonya Bottomley
Bill & Kathy Cissna
Jeff & Linda Dreyer
Charles & Elaine Graham
Melinda Hamrick
Thomas & Kathy Howell
Alvin & Carolyn Jenkins
Tom & Sharon Kasel
Bill & Wendy Korb
Hugh & Lynn Rees-Jones
Ruth Renfro
Traylor & Diana Renfro
Scott Bros. Heating & Air
Norm & Lois Sprinthall
Jim & Rebecca Williams
David & Janice Worth

FRIEND \$50-299

Anonymous
Dede Ashby
Judy Atwell
Scott Ballard
Blue Ridge Art Clan
Douglas & Dorena Boike
Bruce & Cynthia Bortz
Mike & Jane Campbell
Al Cheatham
Don & Theresa Church
Clairene Cockerham
Susan Cole
Therese Coon
Ken Crouse & Cindy Fowler
William & Caroline Crowe
Judy Dancy
Jerrie Dearborn
Betsy Dickens
Amber Dillingham

FRIEND \$50-299 cont.

Bill & Melissa Fields,
IHO Jane Lonon
Peter & Catherine Finch
Sharon Gambill
Reece & Judy Graham
Laura Green
Gene & Laurie Greene
Karin Griffiths
Lee & Claire Hager
Ann Helms
Janice Henson
Greg & Jan Hershner
Bruce Hershock
Joseph Hightower
Ron & Peg Hofstetter
Phil & Fran Holland
Laurie Holloway
Clyde & Eva Ingle
Kathleen Janowiak
Henry H. Jordan II,
IHO Ruth Jordan Ashe
Patsy Kanagy
Larkin & Rosa Kirkman
Tom & Sally Klinedinst
Rick & Diane LaBonte
Lanny & Julie Landry
Nita Langer
Ken & Monica Lynn
Marilyn Maloney
Stuart & Allison Malter
Terri Marshall
Dick & Barbara Miller
Noel Miller
Gil & Eileen Millsaps
Joyce Mize
Phil & Pat Morrison
Vaughn & Beth Morrison
Kay Morrow
Dennis & Dani Mory
Malcom & Patricia Nash
Peter & Janet Nixon
Charlotte Olson, IHO Edmund Gant
Mark & Allyson Perlman
David & Ann Permar
John & Cathy Pfeil
Brandon & Kiet Pham
Harry & Donna Phillips
Betty Powell
George & Nancy Puryear
Donald & Bonita Scott

FRIEND \$50-299 cont.

David Sheets
Carolyn Shepherd
Anne Shumate
Skyline National Bank
Bob & Judy Statnick
Dan Strickland
Summit Support Services
Mark & Kelly Vannoy
Charles & Ellen Vitale
Della Vodenicker
John & Sharon Vodenicker
Oren & Betty Wagner
Penny Harless Ward
Bill Womble & Kay Miller
Greg & Sheryl Wooley

DONOR \$10-49

Anonymous
Joan Croteau
Robin Delgado
Rose Farrington
Mark Guenther,
IMO Tony Testerman
Jennie Halsey
Norman & Nancy Harris
Jim & Libby Hoffman
Janet Jenny
Ellen Joyce
Jack & Denise Lawless
Barbara Lawrence
Pat & Lesa McClellan
Kathy Mendes
Belva Miller
Warren & Sylvia Miller
Carol Norris
Wendy Morrison Painter
Jerry Park
Arvin Pearson
Nancy Putzel
Carol Schmidt
Skip & Mary Schwenn
Barbara Sexton
Mary Underwood
B'Ann Vance
Fay Weaver
Tena Wenta
Whit & Mary Kent Whitaker
Ann Whitehouse
Lisa Willingham
Kay C. Wilson
Laura Yaeger

Please take this opportunity to contribute to the Ashe County Arts Council.

Name _____ Phone _____

Address _____

Amount Pledged _____ Payment Enclosed _____

Send your tax-deductible contribution to 303 School Avenue, West Jefferson, NC 28694.

Online donations may be made at www.ashecounyarts.org.

- Donor \$10-\$49
- Friend \$50-\$299
- Patron \$300-\$399
- Benefactor \$400-\$599
- Sponsor \$600-\$999
- Special \$1000-\$2499
- Angel \$2500-\$4999
- Archangel \$5000-up!

SCHOOL ARTS PROGRAMMING

The Arts Council's sponsorship of cultural programs in Ashe County schools continues to enhance students' education through the arts. During January and February, 5 programs will be offered and are sponsored jointly by the Ashe County Arts Council and local schools.

Mike Wiley

Brown vs. Board of Education

January 21, Ashe County Middle & High Schools

Seussasaurian Celebration

A wiggly, giggly reader on the loose with all books Seuss

February 20-21, Blue Ridge, Mountain View, Westwood Elementary Schools

Watch our young people blossom and grow as they experience the arts! Positive ways to express themselves, creative problem solving, preserving our traditions, and team building life skills are all by-products of active participation in the arts.

REGISTRATION OPEN NOW!



MEET OUR TEACHING ARTISTS



Cathy Fink
cathymarcy.com



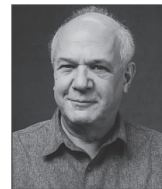
Alice Gerrard
alicegerrard.com



Marcy Marxer
cathymarcy.com



Tom Paxton
tompaxton.com



Jon Weisberger
jonweisberger.com

In honor of Ola Belle Reed as a songwriter, storyteller and humanist who used her craft and art to build community and love.

April 17-19, 2020
Friday 10am thru
Sunday 5pm

Steeped in the mountains of Ashe County, NC, top-notch songwriters give 11 hours of instruction across various levels of songwriting. Add jam sessions, a beautifully produced student showcase and evening concert with instructors to fill a weekend of songwriting inspiration and skill that will keep you writing.

Cost: \$300/adults
\$150/students

Tuition assistance and limited partial scholarships are available.

Pre-registration is required. Spaces are limited.



962 Mt. Jefferson Rd., West Jefferson, NC



ashecounartyarts.org • 336.846-2787
Sponsored by Ashe County Arts Council

Would you like to receive timely reminders about special arts happenings in Ashe County? We'd be glad to add you to the growing list of folks who receive regular email blasts about upcoming concerts, exhibits, opportunities for artists, and special arts events. Send us a message with your email address and we'll put you on the list! Stay in touch electronically and don't miss out on arts happenings! And remember to check our website, www.ashecounartyarts.org for updated information about the arts. Respond to Rebecca at programs@ashecounartyarts.org.



WKSK GARY POE RADIO SHOW

The popular WKSK Gary Poe Radio Show returns to the stage of the Ashe Civic Center "live" on Saturdays in January and February. Stay tuned for dates and performers! The broadcast begins "a little after 11" with Gary bringing everyone the best in bluegrass and old time music. Admission is free! What a great way to spend a wintry Saturday morning!

Thank you! Thank you!

Thanks to all of our hard working committee members, our movers and shakers and folks who do things for us on a daily basis.

Bill and Donna Apple, Wesley Barker, Tab Bell, Peggy and Jerry Brandt, Joy Campbell, Theresa Early Curd, Amber Dillingham, Jeff and Linda Dreyer, Dave and Lynne Eastburn, Melissa Fields, Jan and Jim Gambill, Evalynn Halsey, Kathy Howell, Kim Isler, Carolyn Johnson, Dana Johnson, Wayne and Diane Johnson, Sharon Kasel, Peter Leslie, Grady and Jane Lonon, John MacConnell, John and Jane Maddocks, Michael Malloy, Becky Marsten, Larry Massey, Edie Miller, Steve and Susan Miller, Dani Mory, Barb Naser, Ed and Ellie Perzel, Gary Poe, Scot Pope, Traylor and Diana Renfro, Sarah Sanders, Barbara Sears, John and Lucy Smyre, Leila Spriggs, Pam Tapp, Tom Truxal and Susan Jespersen, Charlie and Ellen Vitale, Susan Van Wyk, Guyla Vardell, Della Vodenicker, June Weaver, Jim Williams, Paula Williams, and Page Worthington.



REGIONAL ARTIST PROJECT GRANT AWARDS

The Northwest Regional Artist Project Grant Program is proud to announce our 2019 winners. The RAP program is a joint project of the Watauga, Ashe, Wilkes, and Alleghany Arts Councils in partnership with the North Carolina Arts Council. Through the program grants are awarded to artists from the four-county region in an effort to help them move "from one level to the next" in their artistic careers. This year's winners are (L-R) Annie Woodford (Watauga), Daniel Cater (Alleghany), Paige Whitley-Bauguess (Wilkes), Adam Kahn (Watauga), Rachael Salmon (Watauga), Rosa Dargon-Powers (Watauga), Betsy Brey (Wilkes), and Diane Morrison (Alleghany). Not pictured are Cara Hagan (Watauga) and George Pennell (Watauga). This is the 22nd year of the project and, in those years, over \$126,000 has been awarded to 201 artists. For more information, contact any of the four county arts councils or organizations.



North
Carolina
Arts
Council
*Fifty years
of leadership*

ARTifacts



SAVE THE DATE!

ARTifacts Yard sale time is coming up in April! The Arts Council will start collecting your "stuff" on Wednesday, April 15. The Preview Party will be on Friday, April 17 and the big sale is on Saturday, April 18 beginning at 8am. These are different dates than previously announced, so mark your calendars now!